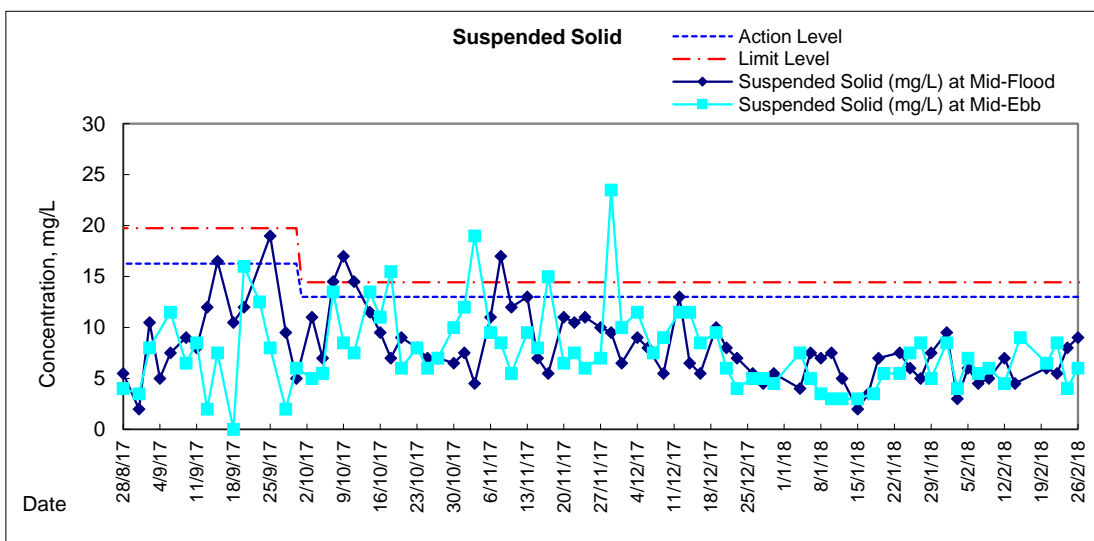
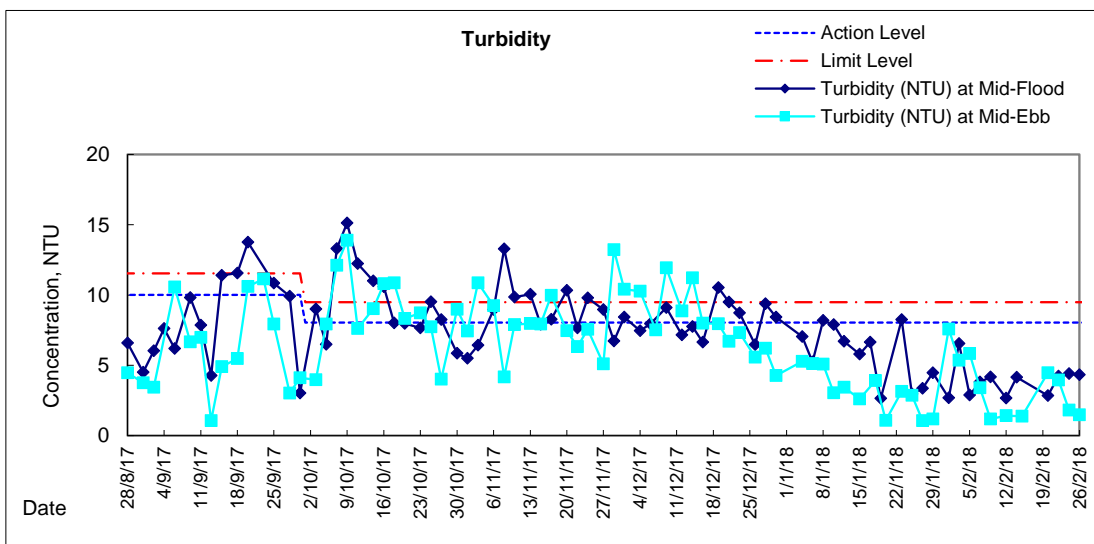
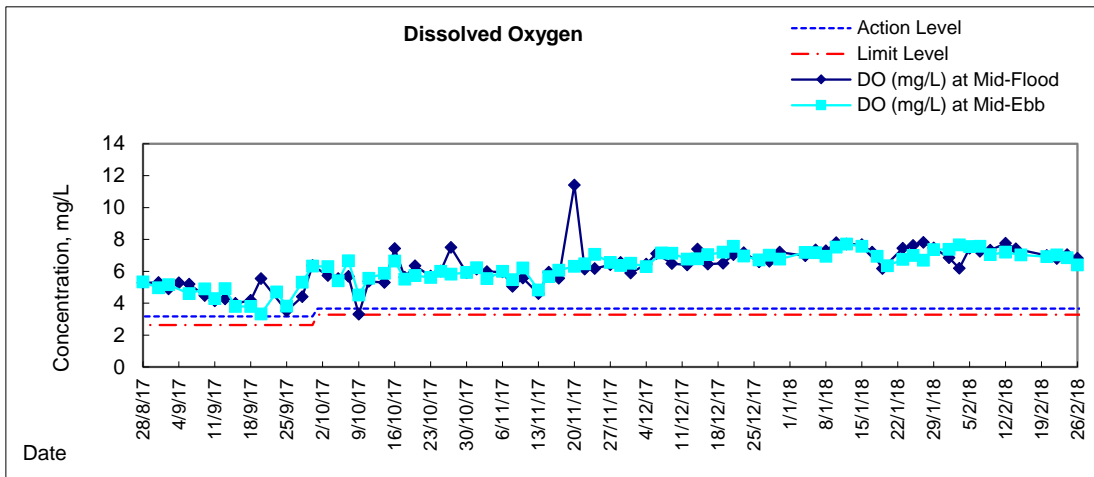


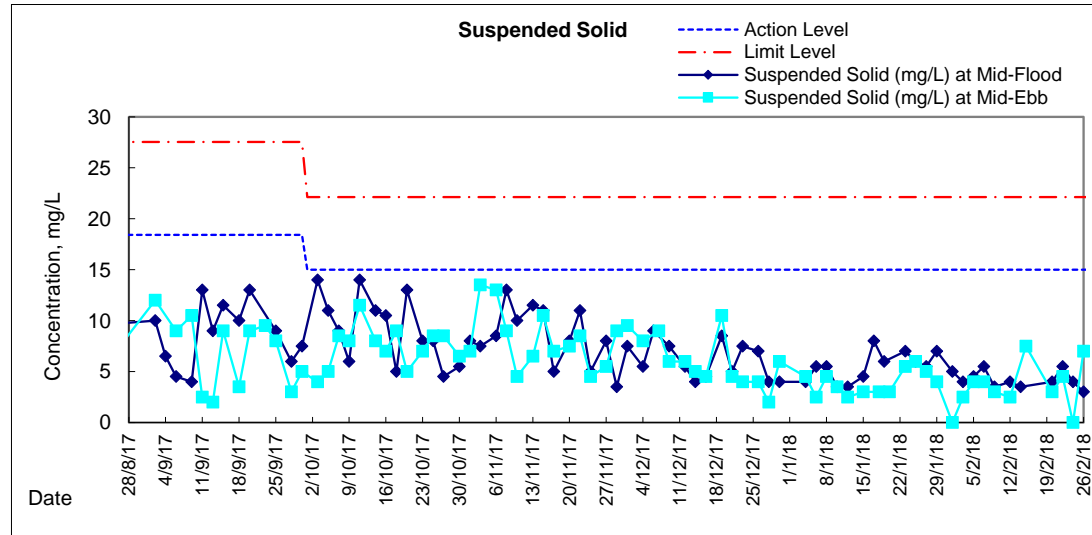
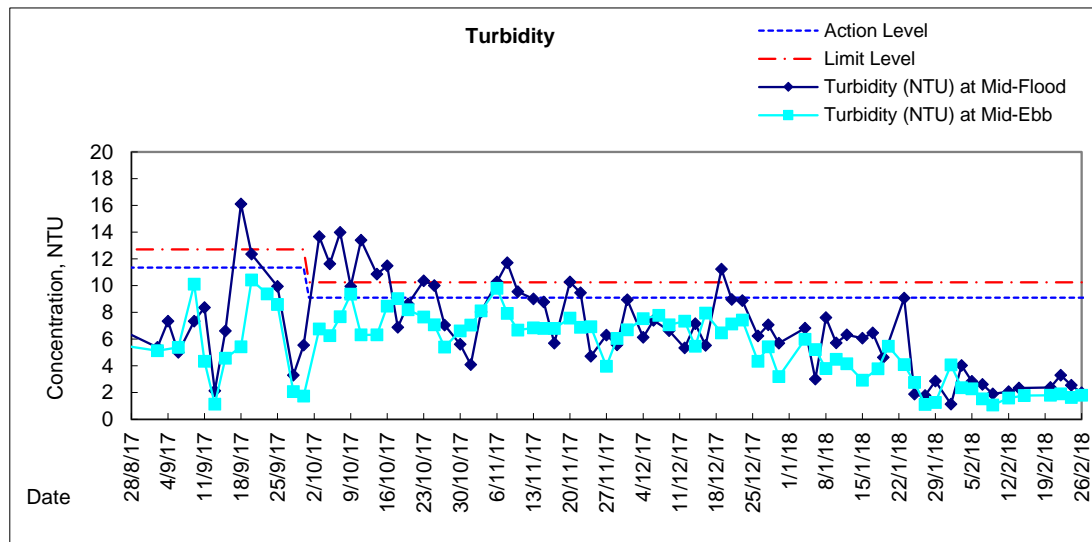
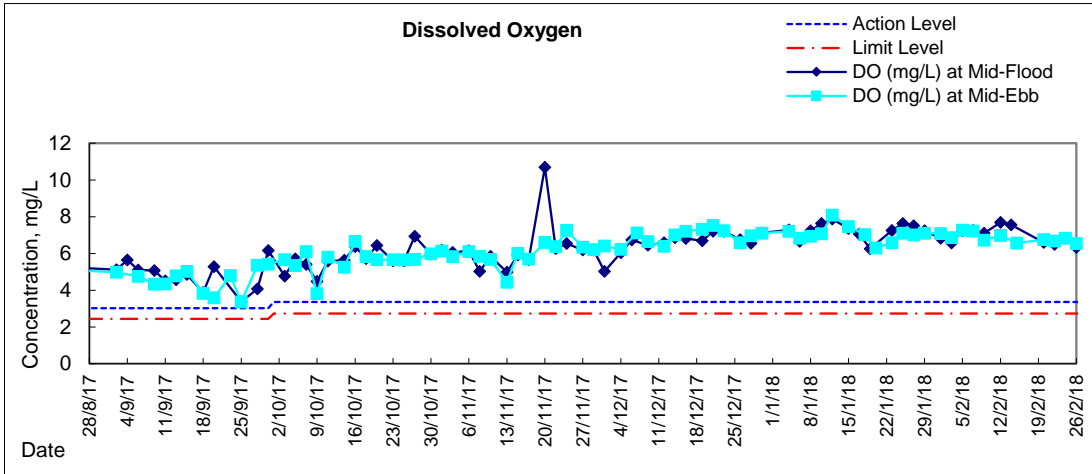


Graphic Presentation of Water Quality Result of WSD19 - Sheung Wan



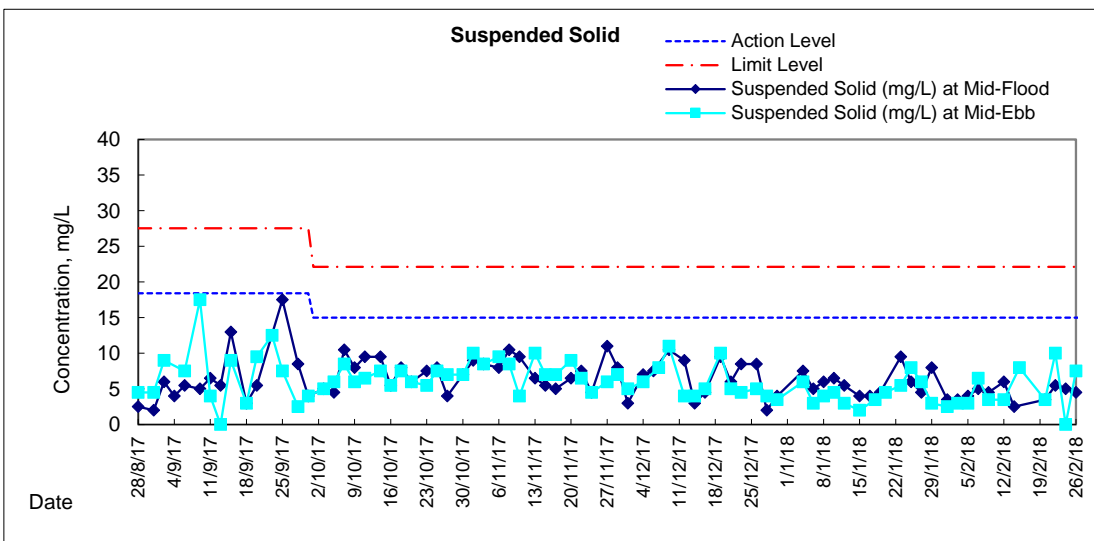
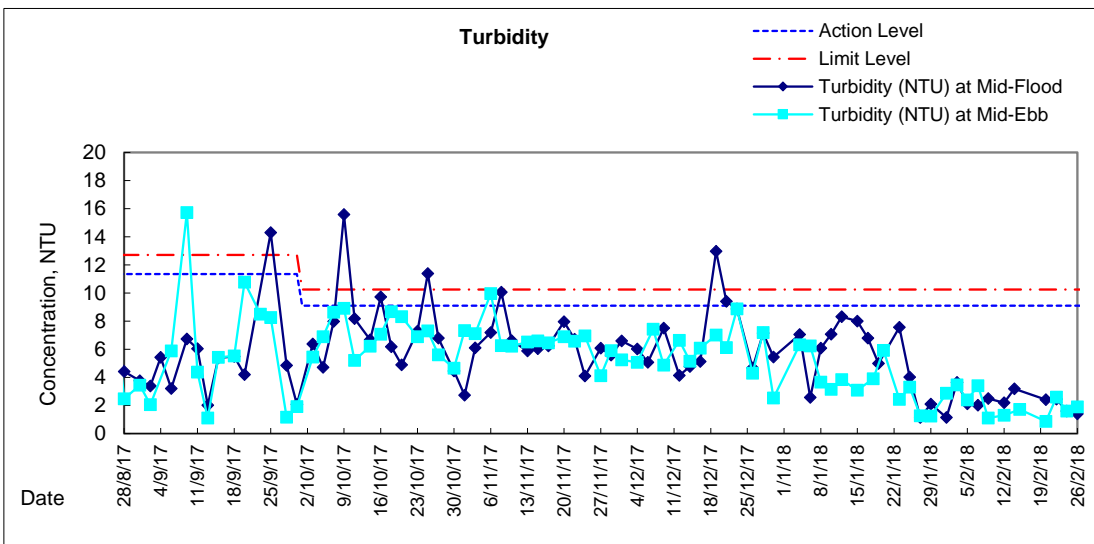
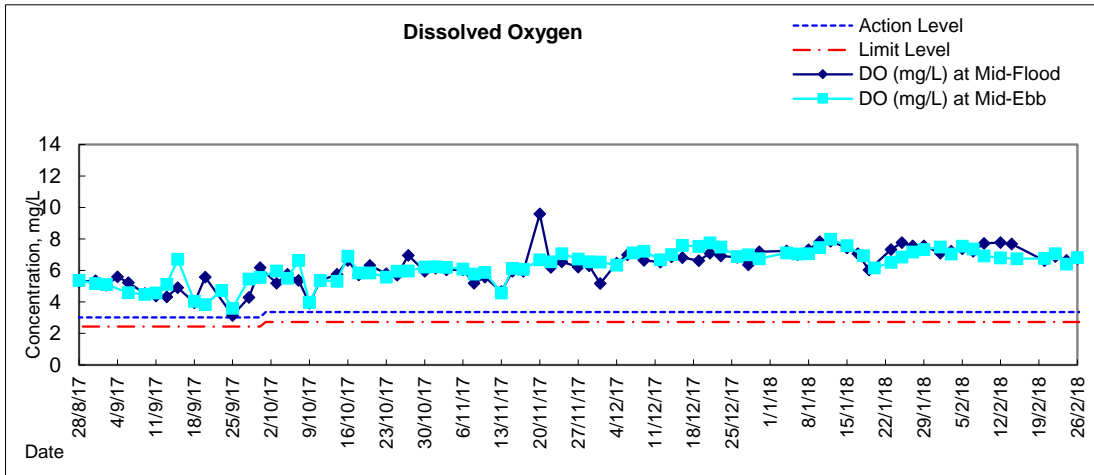


Graphic Presentation of Water Quality Result of C1 - HKCEC



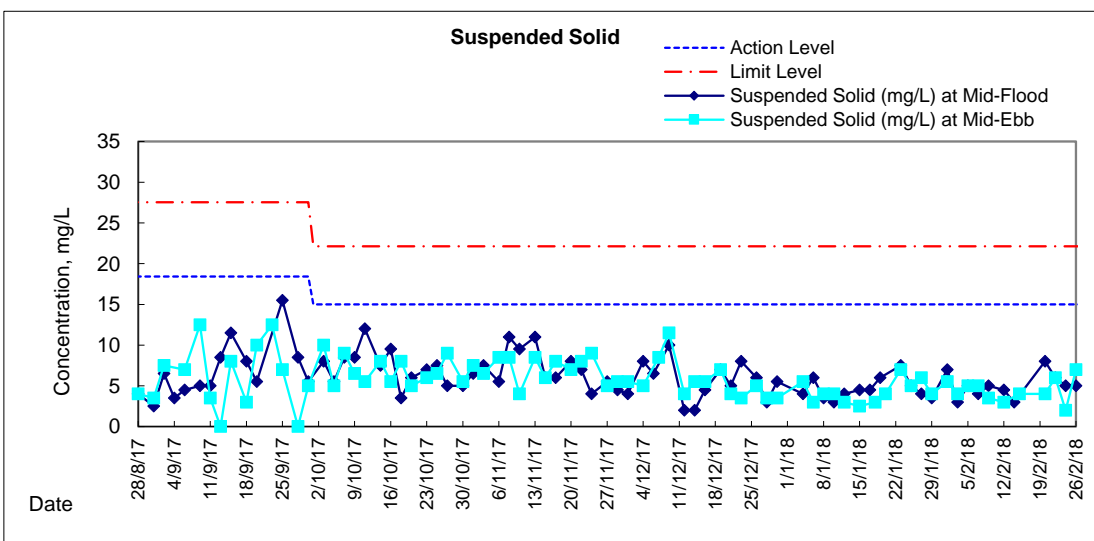
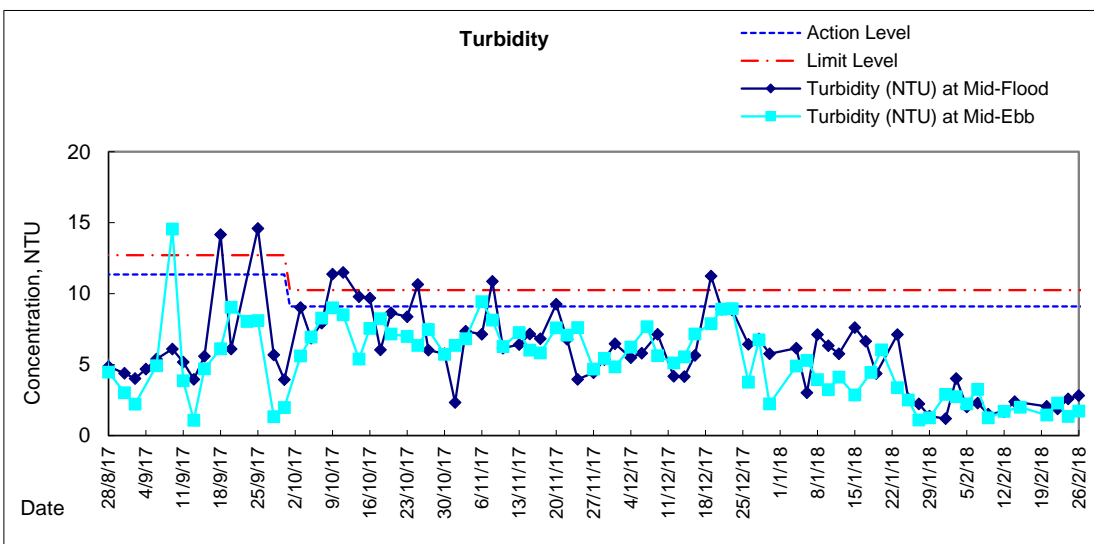
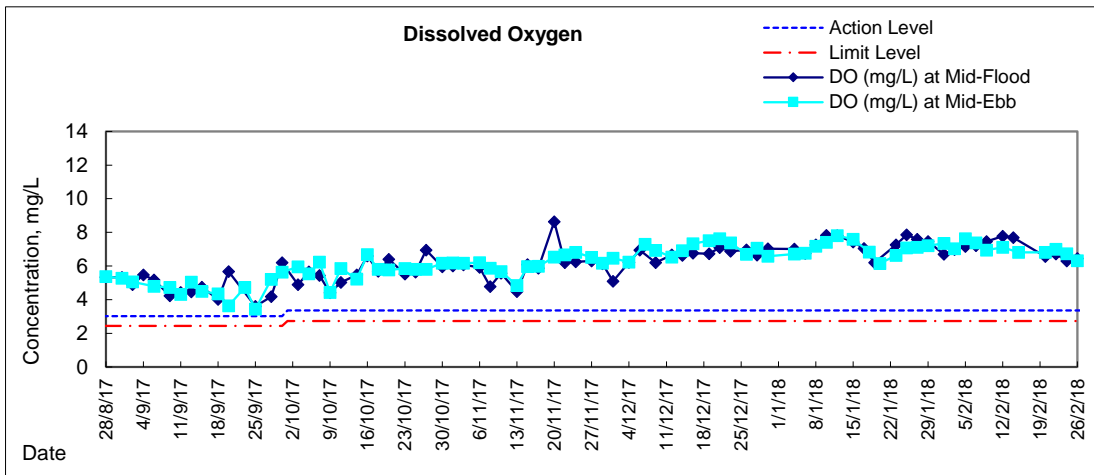


Graphic Presentation of Water Quality Result of P1 - HKCEC Phase I



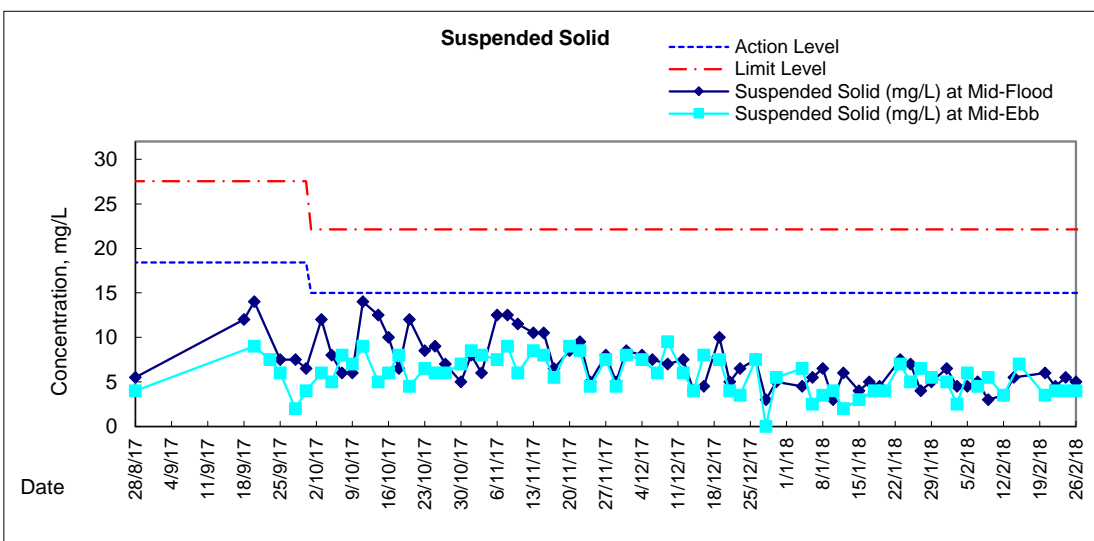
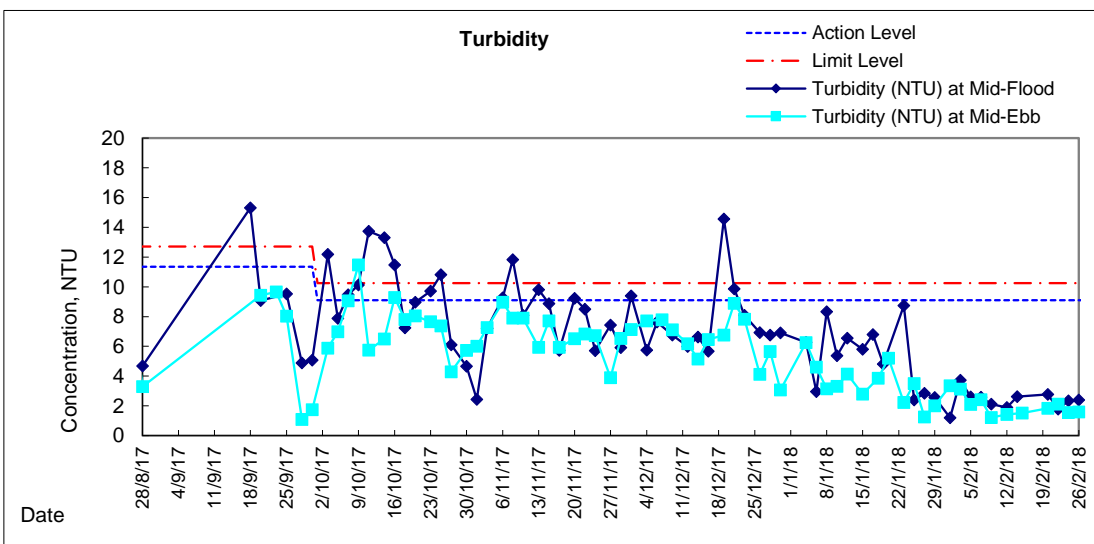
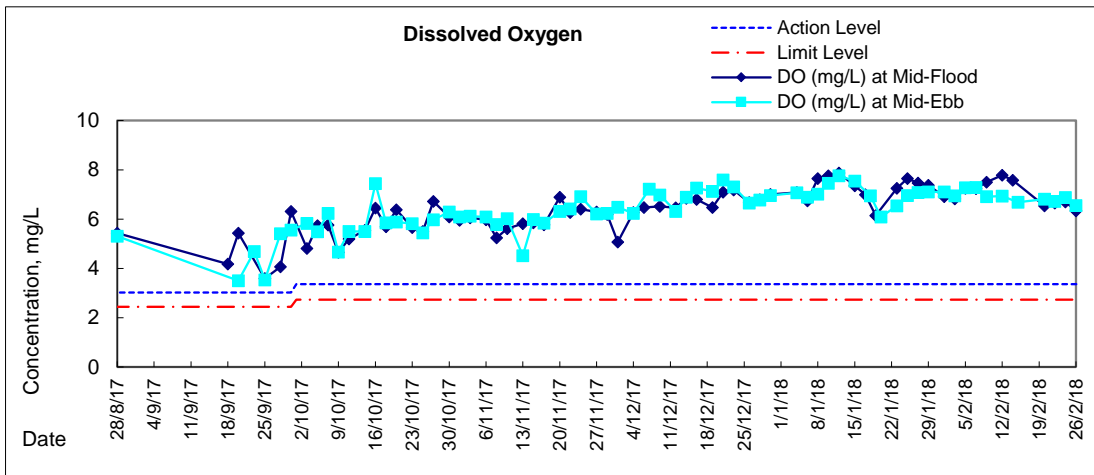


Graphic Presentation of Water Quality Result of P3 - APA



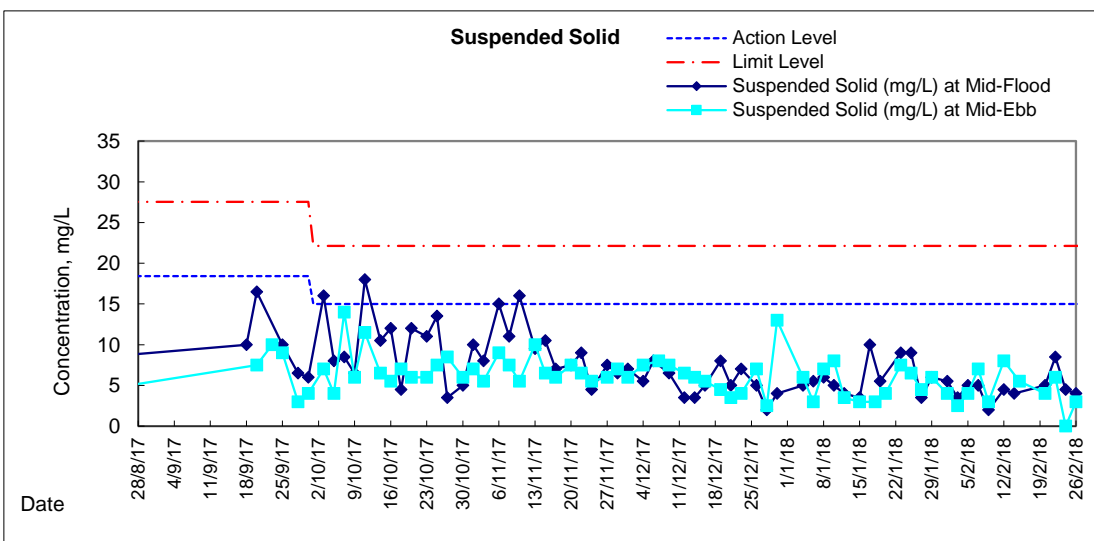
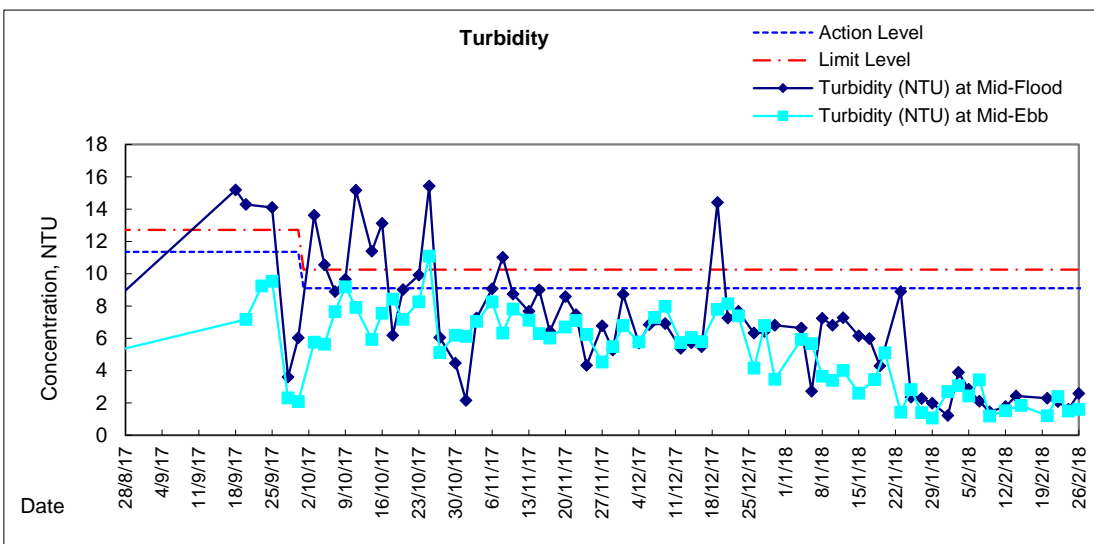
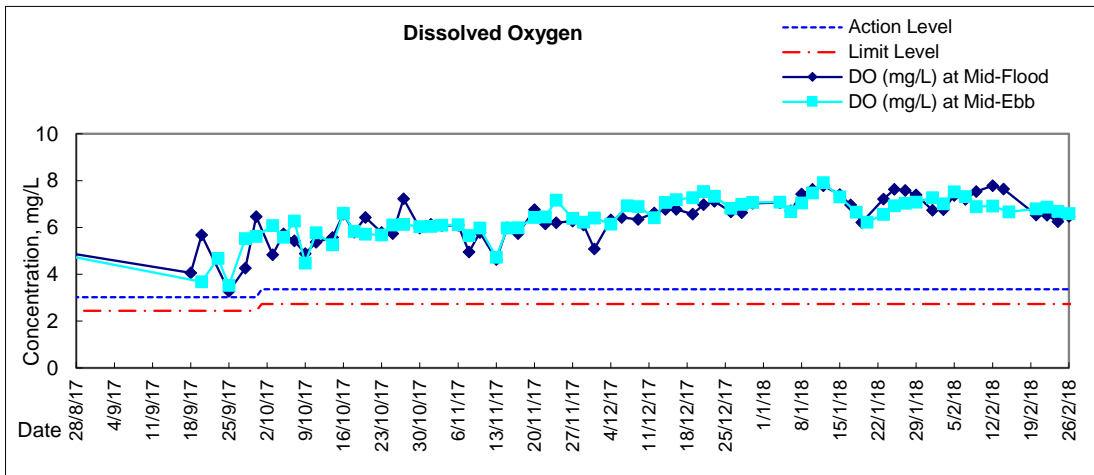


Graphic Presentation of Water Quality Result of P5 - WCT / RT / IT



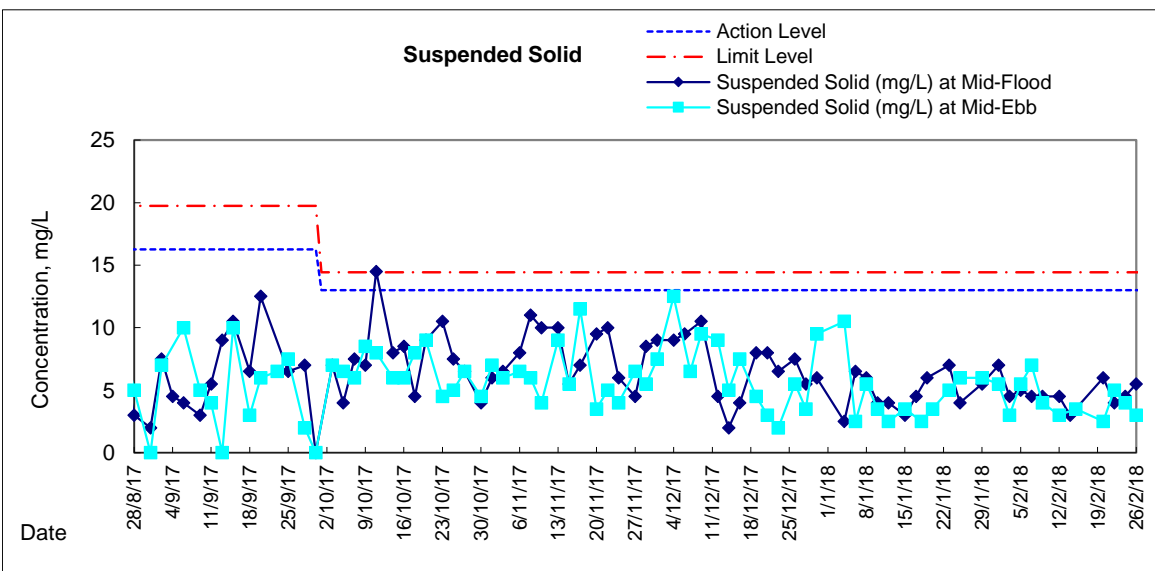
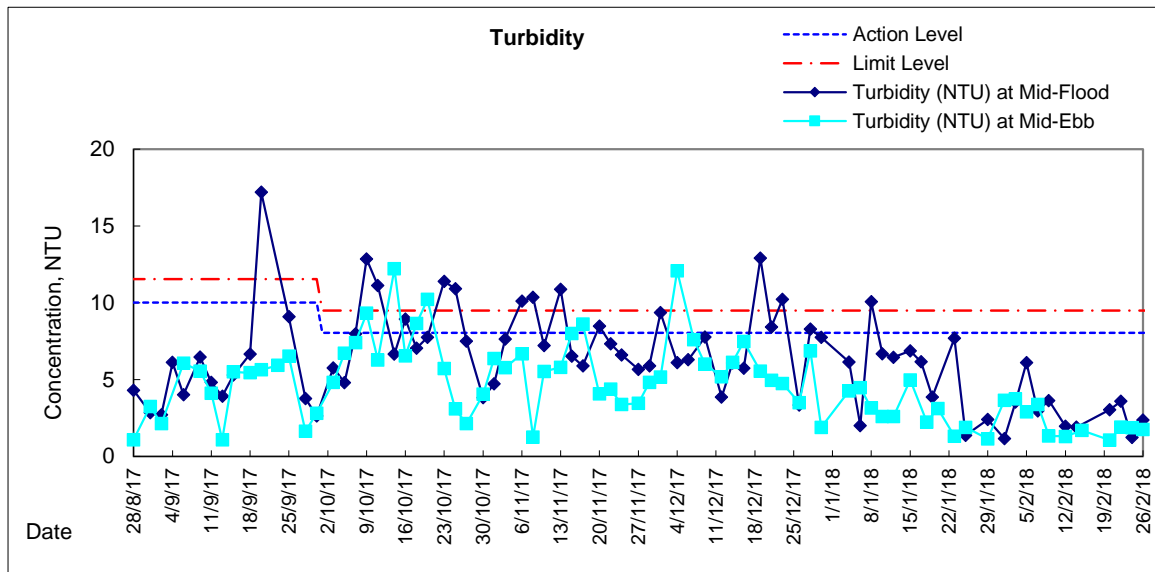
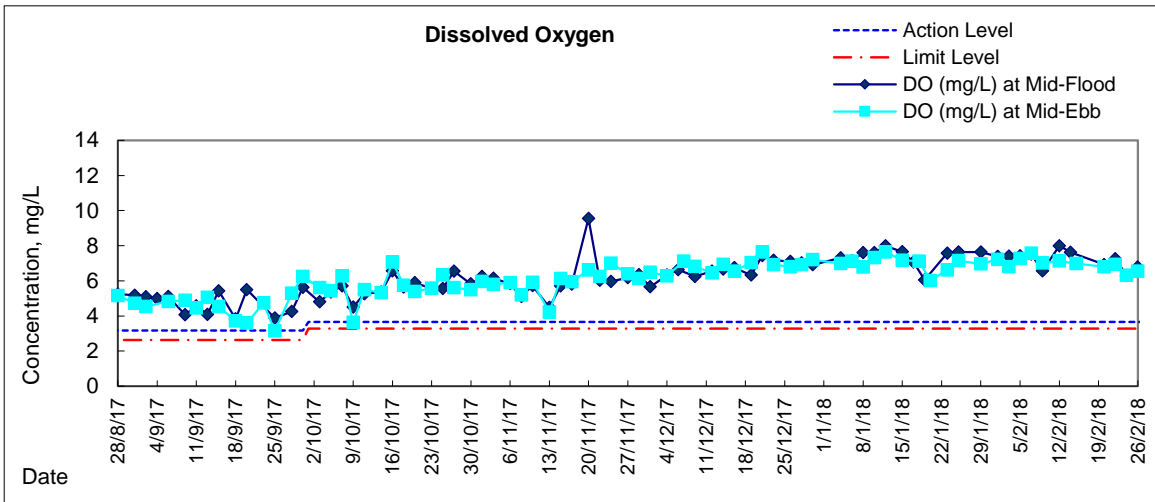


Graphic Presentation of Water Quality Result of P4 - SOC



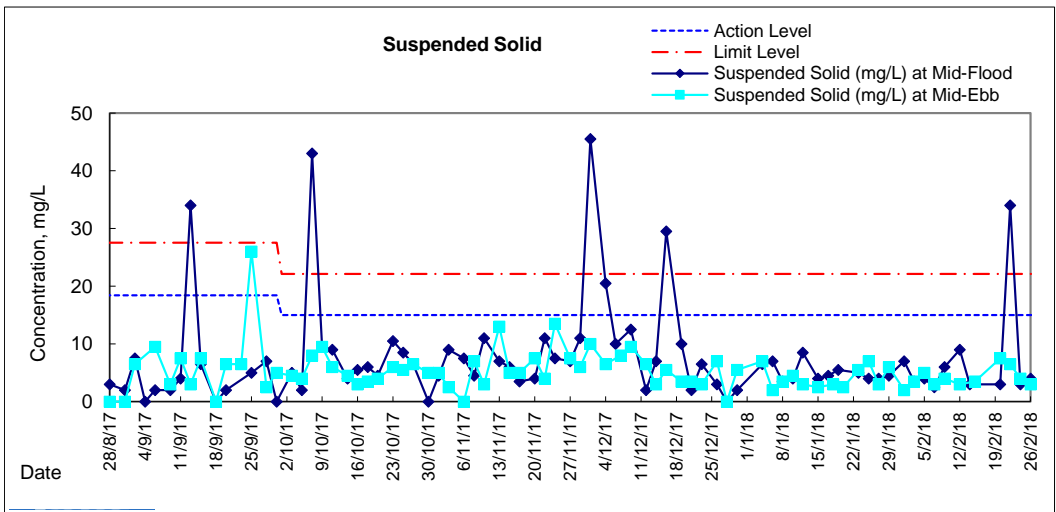
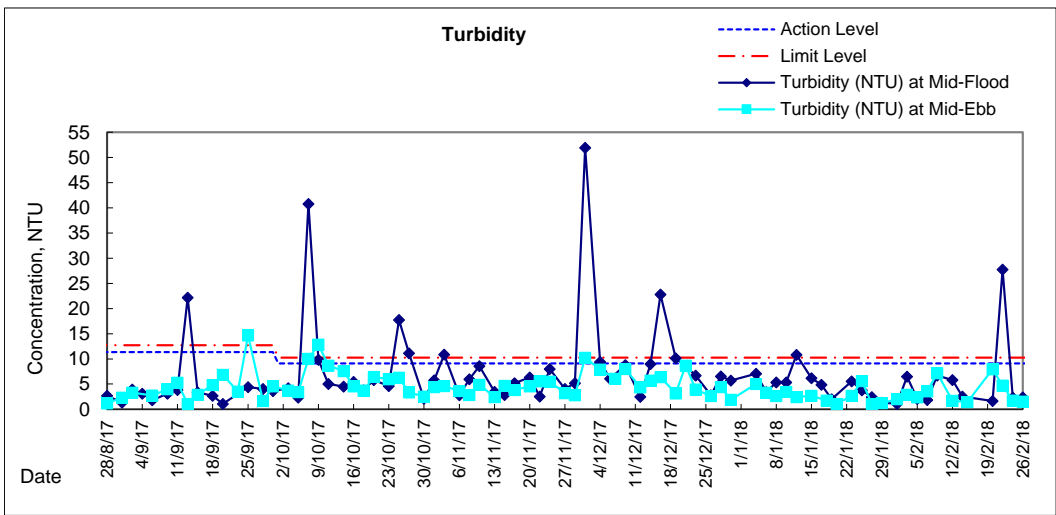
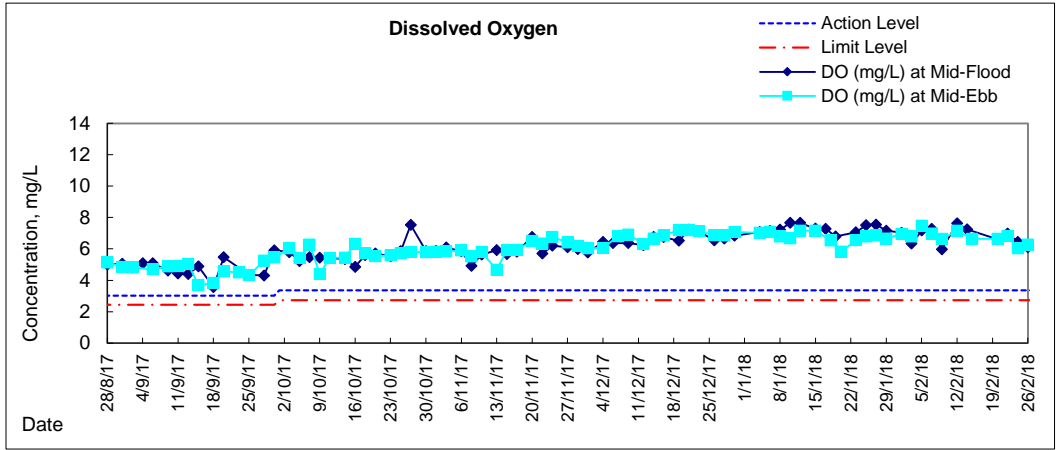


Graphic Presentation of Water Quality Result of RW21-P789 - GEC/CRC/SHK



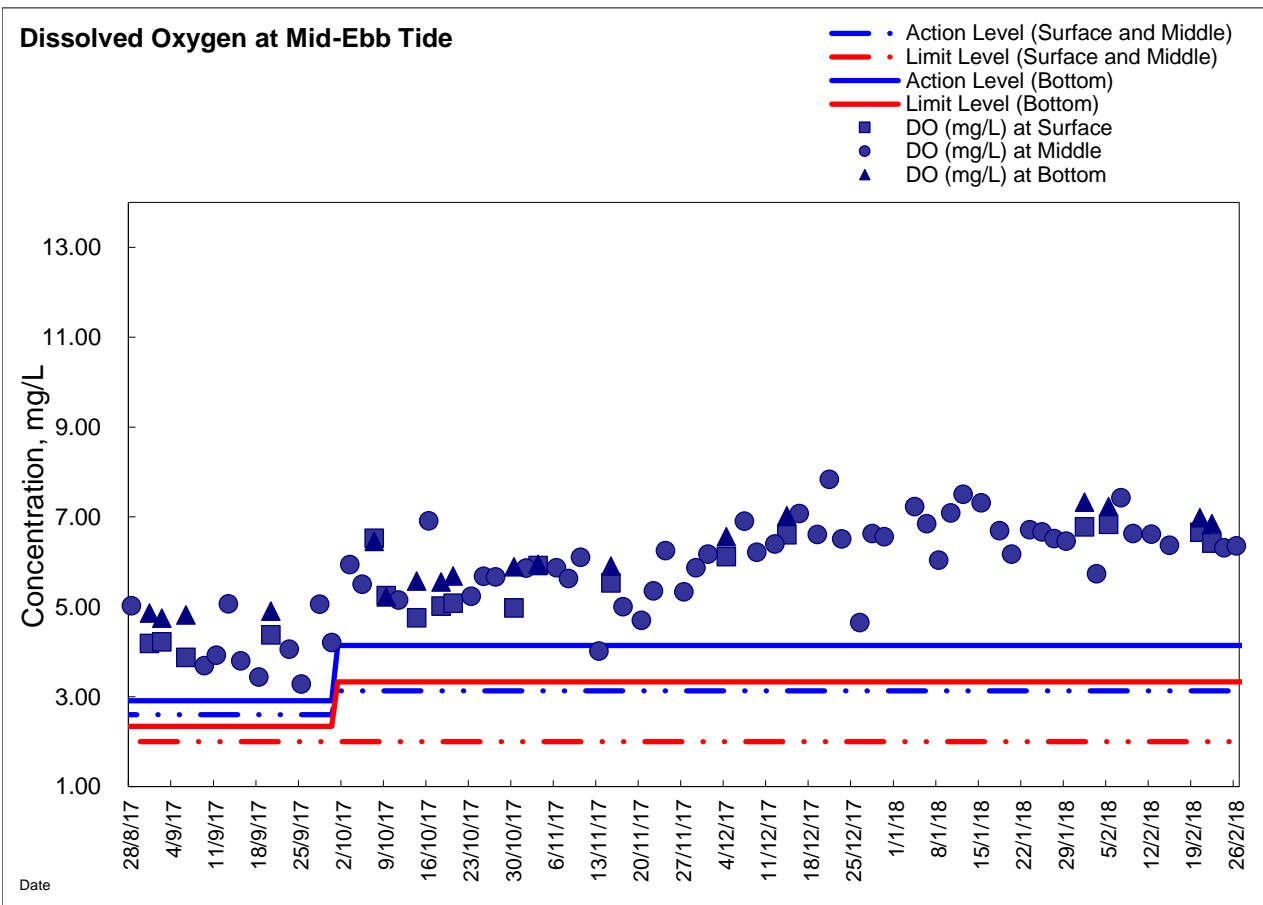
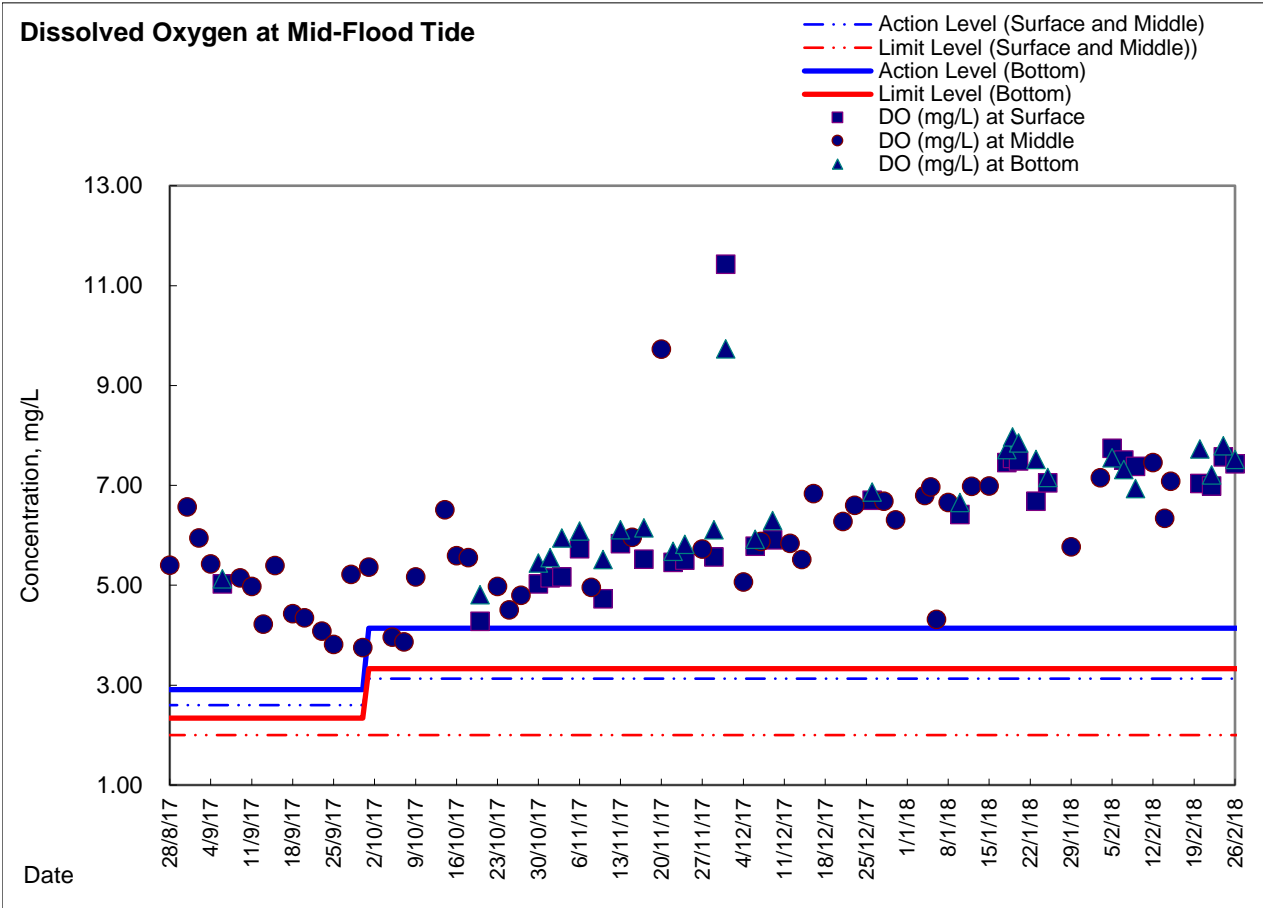


Graphic Presentation of Water Quality Result of C7 - Windsor House



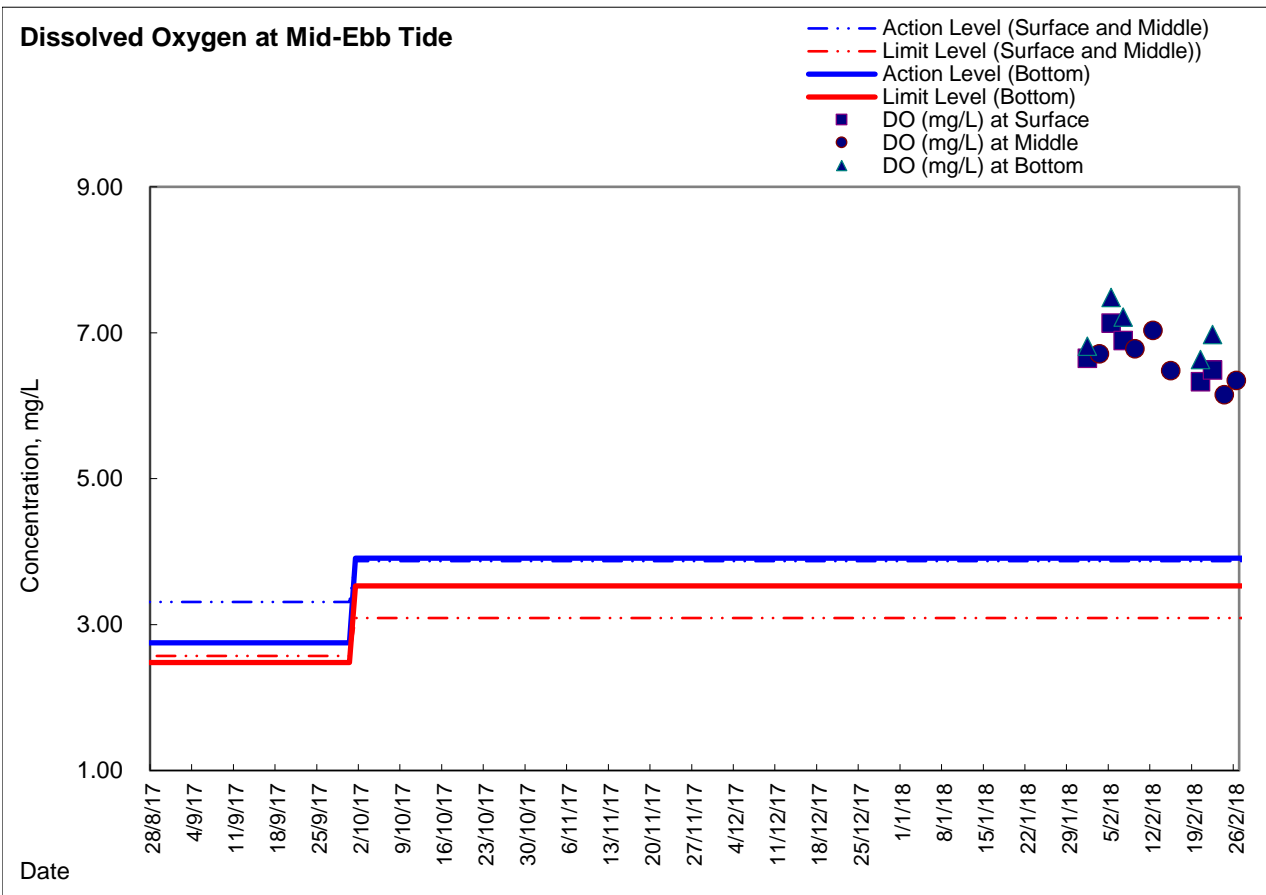
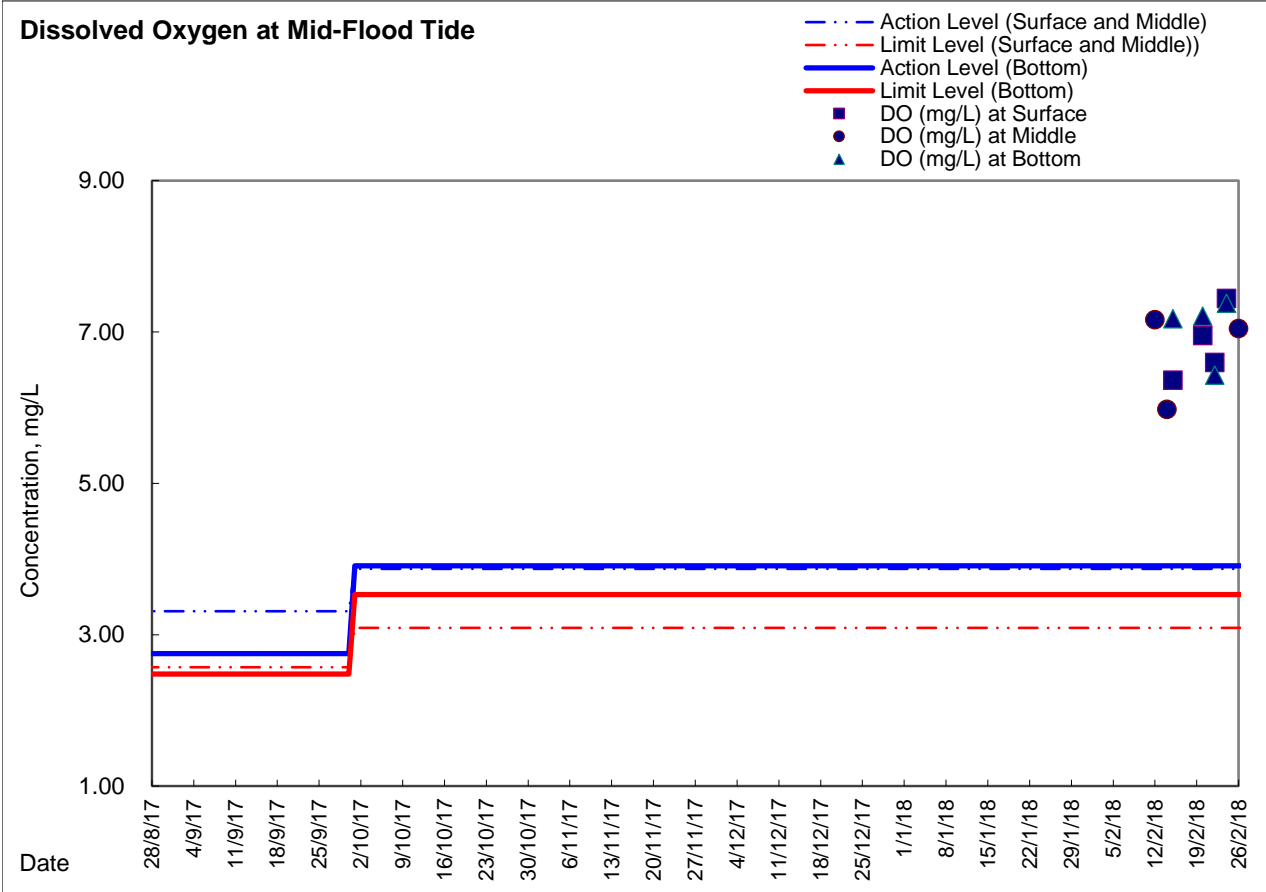


Graphic Presentation of Enhanced Water Monitoring Results (DO) at C6 - Excelsior Hotel





Graphic Presentation of Enhanced Water Monitoring Results (DO) at C7 - Windsor House



Remark: Enhanced DO monitoring at Windsor House Cooling (Station Ref: C7) was temporarily suspended since 22 October 2014 with respect to the formation of temporary reclamation zone TS3 and was resumed from 1 February 2018 onwards with respect to the completion of removal of temporary reclamation zone.